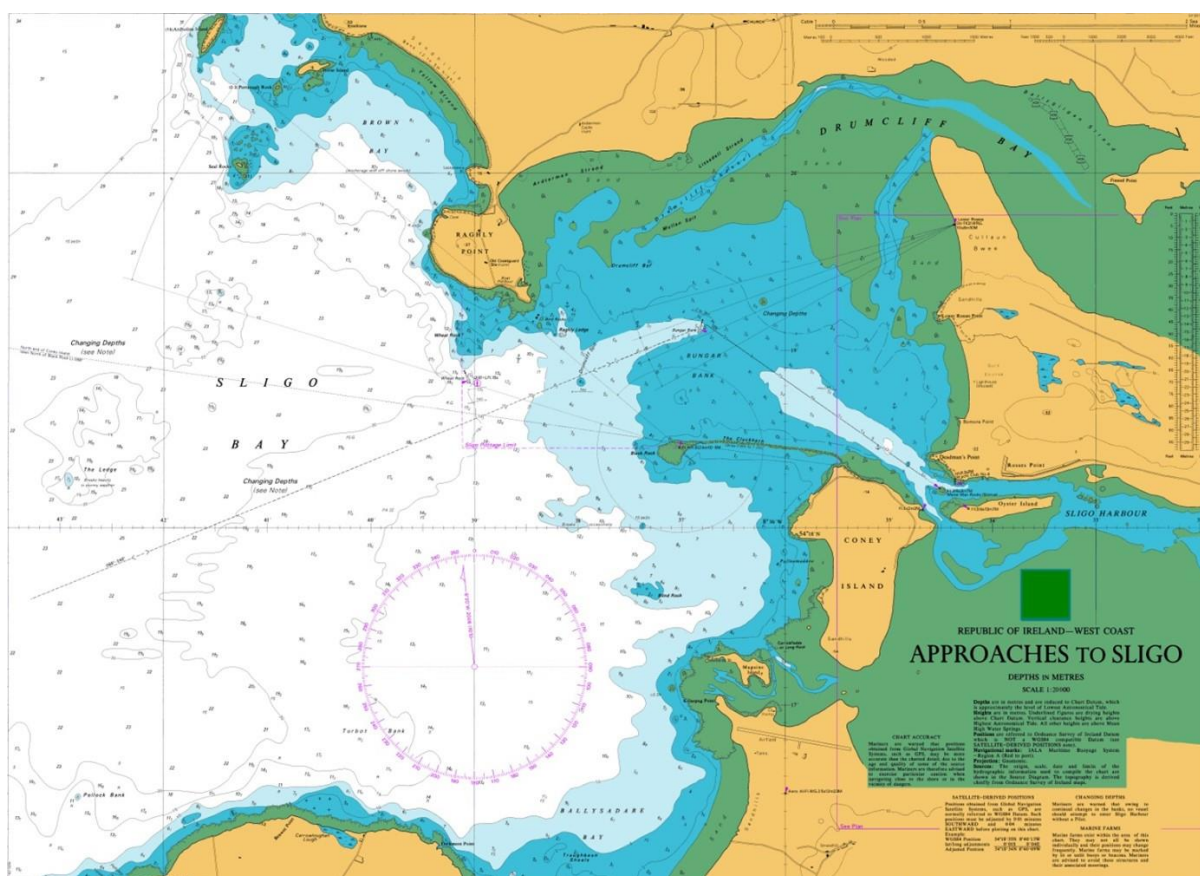


# PORT OF SLIGO

## PORT WASTE RECEPTION & HANDLING PLAN 2023



© Crown Copyright and/or database rights. Reproduced by permission of the Controller of Her Majesty's Stationery Office and the UK Hydrographic Office ([www.ukho.gov.uk](http://www.ukho.gov.uk))

## Contents

PREFACE .....	2
Document Control Procedure .....	3
Distribution.....	3
Definitions .....	4
1.0 INTRODUCTION.....	5
1.1 Overview – Aims & objectives.....	5
1.2 Sligo Harbour.....	5
1.2.1 Constitution.....	5
1.2.2 Pilotage District of Sligo Harbour .....	5
1.2.3 Map and Details of Jurisdiction .....	6
1.2.4 Sligo Port Facilities .....	6
1.3 Purpose of Plan.....	7
1.4 Assessment of Need for Port Waste Reception and Handling Facilities .....	7
1.5 Consultation .....	8
1.6 Health & Safety / Training .....	8
1.7 Management of Plan .....	8
1.8 Organisation and Communication .....	8
2. OPERATION OF PLAN .....	9
2.1 Area of Application .....	9
2.2 Port Waste Reception and Handling Facilities .....	9
2.3 Notification .....	11
2.4 Delivery and Disposal of Waste.....	11
2.5 Cost Recovery System .....	12
3. Procedures.....	13
3.1 Supervision & Enforcement .....	13
3.2 Reporting & Receipts .....	13
3.3 Complaints Procedure/ Compensation for undue delay .....	13
3.4 Contract for disposal of waste.....	13
ANNEX 1 .....	14
ANNEX 2.....	17
ANNEX 3.....	19
ANNEX 4.....	19
Annex 5.....	23

## PREFACE

### Document Control Procedure

This document and its contents have been prepared and are intended solely for use in relation to Port Waste Reception and Handling at Port Of Sligo .

The responsibility for controlling this document is with Sligo County Council Harbour Office.

This plan will be kept under review to ensure that the document remains appropriate for all Sligo Harbour activities.

The maximum period between formal reviews of the Plan will be 5 years.

### Document History

Revision	Purpose description	Prepared By	Reviewed by	Authorised by	Date
Rev 0	Draft	BF	JOH	TP	08/06/22
Rev 1	Draft	JOH	JC	TP	17/11/22
Rev 2	Draft	JOH	JC	TP	08/12/22
Rev 3	Draft	JOH	JC	TP	31/07/23

### Distribution

This document and subsequent updated / amended versions of same should be circulated as follows:

- Harbour Master, Port of Sligo
- Sligo County Council website
- Department of Transport (Maritime Environment and ORE Facilitation Division)
- Department of Agriculture, Food and the Marine
- Shipping Agents –
- Nominated Waste Contractor

## Definitions

As provided for in STATUTOY INSTRUMENT S.I. No. 351 of 2022 – European Union (Port Reception Facilities for the Delivery of Waste from Ships) Regulations 2022

## 1.0 INTRODUCTION

### 1.1 Overview – Aims & objectives

The overall aim of this port reception and handling plan for Port of Sligo is to protect the marine environment by reducing discharges into the sea, of ship generated waste and cargo residues; to improve the availability and use of reception facilities and strengthen the enforcement regime.

Its objectives are:

- To reduce illegal discharge of waste from vessels
- To fulfil legal duties with regard to waste management
- To consult with users, agents, operators, contractors and regulators in the development and implementation of waste management strategies
- To minimise the production of waste wherever possible
- To re-use or recycle waste wherever possible
- To dispose of waste in such a manner as to minimise negative environmental effects

### 1.2 Sligo Harbour

#### 1.2.1 Constitution

With effect from 13 June 2006 (S.I. No. 316 of 2006) the then Minister for Transport with the consent of the Minister for the Environment, Heritage and Local Government transferred the property, rights and liabilities of Sligo Harbour Commissioners to Sligo County Council. This transfer was carried out in accordance with Section 88(2) of the Harbours Act 1996 ( No. 11 of 1996).

#### 1.2.2 Pilotage District of Sligo Harbour

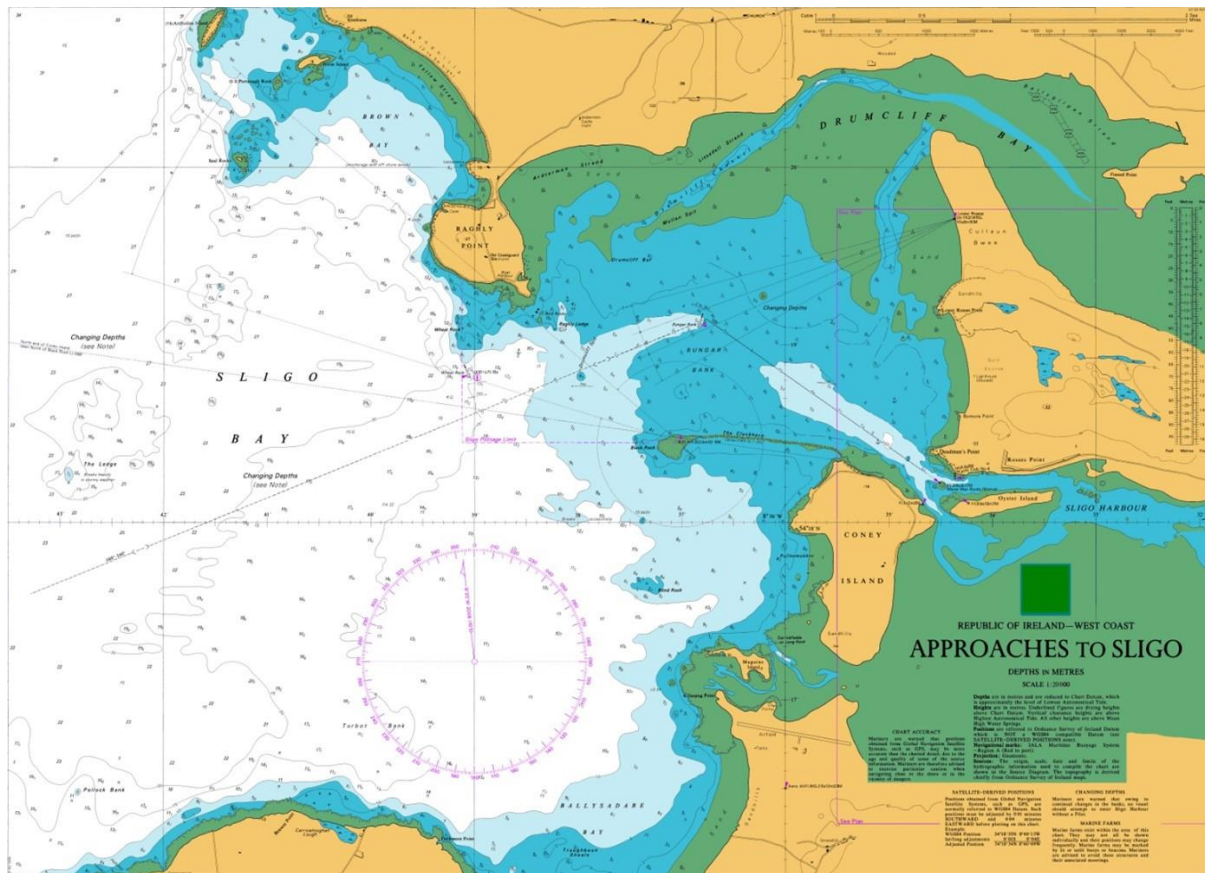
S.I. No. 206 of 2013 describes the limits of the pilotage district of Sligo Harbour as:

“The waters of the River Garavogue below the Victoria Bridge (now Hyde Bridge) at Sligo, and so much of the sea as lies within an imaginary line drawn true south from Wheat Rock until it intersects an imaginary line drawn true west from Black Rock Lighthouse.

This order is cited as the Harbours Act1996 (Establishment of the Pilotage District of Sligo Harbour) Order 2013.

The Map at 1.2.3. below sets out the Pilotage District of Sligo Harbour.

### 1.2.3 Map and Details of Jurisdiction



© Crown Copyright and/or database rights. Reproduced by permission of the Controller of Her Majesty's Stationery Office and the UK Hydrographic Office ([www.ukho.gov.uk](http://www.ukho.gov.uk))

### 1.2.4 Sligo Port Facilities

#### **Vessels up to 2,500 DWT**

There are 2 berths available at Deep Water Jetty and Barytes Jetty, Sligo with 6m of water at Mean High-Water Springs (on Spring tides). Ships of up to 2,500 dwt and 100m in length can be accommodated.

#### **Pilotage**

Pilotage is compulsory. Pilots are on stations 2 hours before high water to high water. Ch 16 / Ch12 V.H.F are monitored during office hours.

A pilot launch efficiently carries the pilots to and from the vessels in the channel and can assist vessels while docking.

## **Storage**

7 acres of uncovered storage is available on and adjacent to the Deep Water Jetty and the Barytes Jetty

## **Weighbridge**

Two 60 tonne capacity weighbridges are available for use.

## **Water**

Freshwater is readily available at all berths

### **1.3 Purpose of Plan**

This plan is in place to ensure:

- compliance with all relevant legislation;
- that Port users are aware of their obligations;
- that the Officers of all vessels using Sligo Port are aware of their obligations and the systems in place with regard to waste management; and
- that Sligo County Council, as port authority of Port of Sligo, make provision for the proper reception of port related waste.

This plan is prepared in compliance with S.I. No. 351 of 2022 – European Union (Port Reception Facilities for the Delivery of Waste from Ships) Regulations 2022

### **1.4 Assessment of Need for Port Waste Reception and Handling Facilities**

From analysis of marine traffic in the area and in consultation with port users, Port of Sligo has identified a requirement for the following types of waste reception facilities at the pier:

#### **SEE POINT 1**

**Garbage** (including food waste) can be delivered to the skip (clearly marked) on the Jetty. All waste must be bagged and tied to minimise odour.

*“garbage” includes all kinds of food wastes, domestic wastes and operational wastes, all plastics, cargo residues, cooking oil, fishing gear, and animal carcasses generated during the normal operation of the ship and liable to be disposed of continuously or periodically except those substances which are defined or listed in other Annexes to the present Convention and does not include fresh fish and parts thereof generated as a result of fishing activities undertaken during the voyage, or as a result of aquaculture activities which involve the transport of fish including shellfish for placement in the aquaculture facility and the transport of harvested fish including shellfish from such facilities to shore for processing;*

**Cooking Oil** can be disposed of in the skip. It must be contained in a plastic container with the lid securely fastened.

**Waste oil** can be collected by a contractor arranged through the ship's agent.

**Cargo Residues** are limited if there is any, some Master's have their own skip/wheelie bin on board the vessel and sweeps the quay after loading has been completed. The remainder of the ships will hire a skip for the clean up.

This waste is usually mud or dust and the Master arranges to dump it at the nearby Greenstar Transfer Station located adjacent to the Port at Deep Water Quay.

Sewage can be collected by a contractor arranged through the ship's agent.

### 1.5 Consultation

The Harbour Master has direct contact with the ships and 2 main stevedores. Meetings occur daily.

### 1.6 Health & Safety / Training

Sligo County Council as the responsible authority for the Port of Sligo will ensure that all personnel receive the necessary training to acquire the knowledge which is essential for their work on dealing with waste, with specific attention to health and safety aspects pertaining to dealing with hazardous materials. These training requirements are updated as required.

### 1.7 Management of Plan

The Sligo Harbour Office is responsible for the implementation of the Waste Management Plan. They may be contacted on 071-9111237 or 0862616866.

Facilities for the reception of:

- Waste oil
- Oily rags and Filters
- General garbage (incl. Food Waste)
- Sewage

are available at the Port of Sligo

### 1.8 Organisation and Communication

<b>Sligo Harbour</b>  Sligo Harbour Office  Ballast Quay  Sligo  Contact: John Carton	Ph: 071 9111237  Mobile: 00353 86 2616866  Email: <a href="mailto:sligoport@triurconstruction.com">sligoport@triurconstruction.com</a>  <b>Opening Hours – 9am – 5pm</b>  Outside these hours contact Harbour Master Mobile: 00353 86 2616866
---	---



<b>(Regular Shipping Agents)</b> M.K. North West Shipping Ltd. Stradrina Ballinaglera, Carrick on Shannon Co Leitrim N41 KF68	Mobile: 00353 83 3340077 Email: <a href="mailto:michael@northwestshippingservices.com">michael@northwestshippingservices.com</a>
<b>Sligo Harbour Waste Consultant</b> Waste to Zero Simon Rooney Upper Rosses Point Co.Sligo Ireland	00353 71 9177870 00353 868254473 Email: <a href="mailto:simon@wastetozero.ie">simon@wastetozero.ie</a>
Eithne Gore/ Joe Kennedy Maritime Environment and ORE Facilitation Division Department of Transport Leeson Lane Dublin 2	Ph: (01) 6783422 E-mail: <a href="mailto:shipsourcepollutionprevention@transport.gov.ie">shipsourcepollutionprevention@transport.gov.ie</a>
<b>Mr Barry Guckian</b> Sligo County Council Waste Enforcement Officer Environment Section Sligo	Ph: 071 9111026
<b>Sligo Fuels Ltd</b> Deepwater Road Sligo	Ph: 071 9169552
<b>Greenstar Ltd</b> Deepwater Road Sligo	Ph: 071 9143037 Ph: 01 8298992

## 2. OPERATION OF PLAN

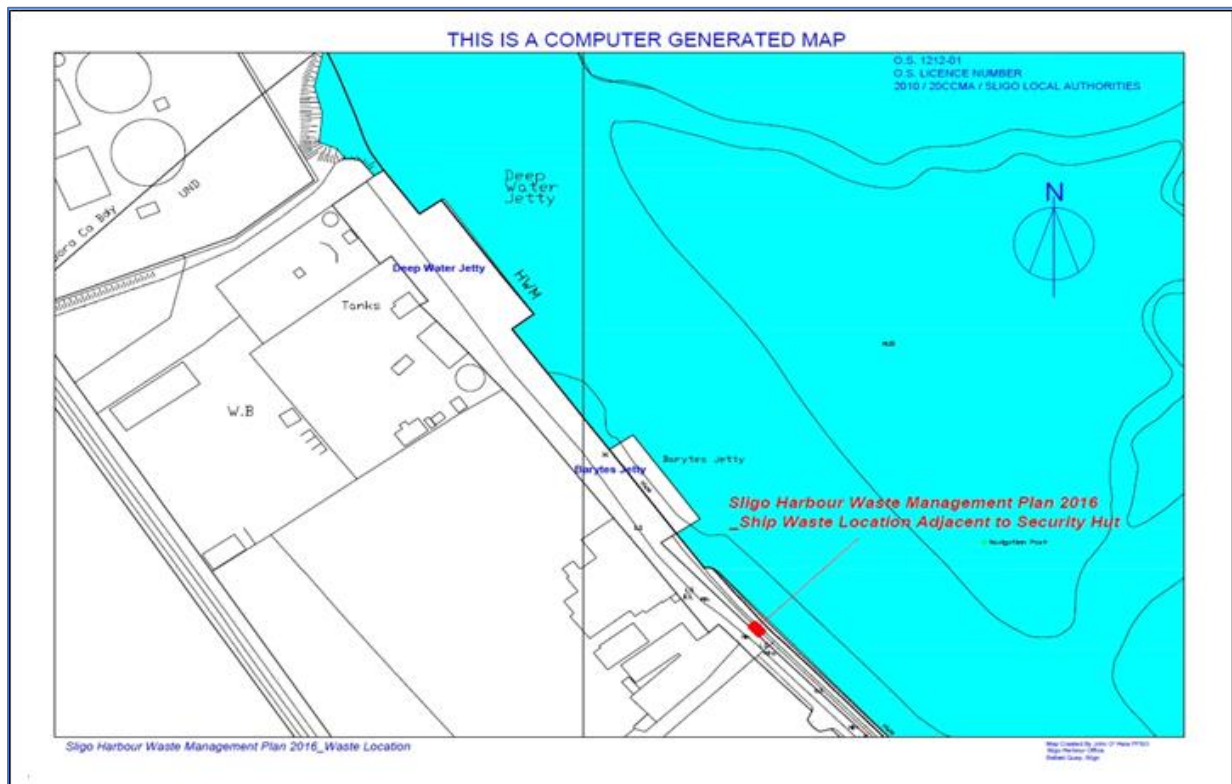
### 2.1 Area of Application

The Area of Operation is as outlined in Map 2.1 below.

### 2.2 Port Waste Reception and Handling Facilities

On the basis of the Assessment of Need for Port Waste Reception and Handling Facilities at Port of Sligo, it has been determined that the provision of 1No. skip located adjacent to the

Barytes Jetty will be sufficient to cater for the anticipated waste to be disposed of at Sligo Port. The exact location of this skip is as shown on Map 2.1 below.



Map 2.1

The 12 cu yds skip is clearly marked to receive Category I Waste only and remains locked at all times other than to facilitate the deposition of waste from ships. All garbage is classed as category 1 international Catering waste and all relevant Department of Agriculture, Food & the Marine procedures for dealing with such are dealt with.



### 2.3 Notification

Ships will notify 24 hours in advance of their intent to deliver waste to the Port Reception facilities. . It is a requirement under 6(2) OF S.I. No. 351 of 2022 that the information from the advanced waste notification shall be reported electronically using Safe SeasIreland. The Ship's Master will fill out the notification form at Annex I

This form will indicate the type and quantity of waste they wish to land and will include the segregation and packing of such waste. The notification form is sent to the ship's Agent who will in turn, inform the Sligo Harbour Office.

- Step 1: Ships Master will complete Advance Notification Form for Waste Delivery to Port Reception Facilities i.e., Annex 1
- Step 2: Ships Master will inform Shipping Agent of intention to deliver waste at the Port of Sligo Handling facility
- Step 3: Shipping Agent will inform Harbour Master Port of Sligo of intention to deliver waste to Sligo Port Handling Facility

Waste from vessels under 300 gross tonnes, fishing vessels, traditional ships and from recreational craft with a length of less than 45m will be handled without prior notification. This however will be subject to availability of Port Staff.

### 2.4 Delivery and Disposal of Waste

Ships arriving at the Port of Sligo are mostly small cargo vessels with crew up to 6 persons on board and waste will generally amount to 2 to 3 bags a call.

While in port, vessels are permitted to land waste on arrival and/or on departure, always under the supervision of the Harbour Master. If the ship's stay is over an extended period, then further collection times will be arranged as required.

Vessels arriving at the Port of Sligo are to have their waste segregated and labelled prior to landing it at the port. The waste (excluding hazardous) will be carried from the ship by a Crew Member as far as the Handling Facility. The Port of Sligo Harbour Master will arrange to have the skip unlocked and will monitor the deposition of waste in the skip. The Harbour Master will issue the ships Master a receipt confirming the quantity of bags disposed of to the skip.

**It is important that all ship's waste is properly delivered for removal, suitably packed and marked. Failure to comply with this will result in the ship's waste being refused and returned on board.**

**Hazardous Waste: Hazardous waste is not normally accepted at the Port of Sligo; however, arrangements can be made with the Shipping agent if necessary.**

## 2.5 Cost Recovery System

In direct fees will be fair, transparent non-discriminatory and reflect the costs of the facilities and services made available, and, where used, the amount of the fees and basis on which they have been calculated shall be agreed with all users. They will cover at minimum 30% of the total direct costs for actual delivery of waste during the previous year and the administrative costs.

No direct fee is charged for MARPOL Annex 5 waste other than cargo residues (except where the volume of waste delivered exceeds the maximum dedicated storage capacity) or passively fished waste.

- All Vessels mooring – standard waste charge - €50.
- Provision of services to ships outside normal hours -No additional charge

A reduction in fees of 10% may be obtained if the ship's design, equipment and operation are such that the master of the vessel can demonstrate that it produces reduced quantities of ship generated waste and manages its waste in a sustainable and environmentally sound manner. No ships engaged in short sea shipping trade.

### 3. PROCEDURES

#### 3.1 Supervision & Enforcement

The Harbour Master shall supervise all waste disposal complete all necessary forms and enforce accordingly.

#### 3.2 Reporting & Receipts

The Harbour Master shall provide the form in Annex 2 to the master of a ship that has delivered waste in accordance with Regulation 8 of S.I. 351 of 2022 – European Union (Port Reception Facilities for the Delivery of Waste from Ships) Regulations 2022

This form shall be retained on board the ship along with the appropriate Oil Record Book, Cargo Record Book, Garbage Record Book or Garbage Management Plan as required by the MARPOL Convention.

The contractor will also issue receipts for all waste removed from Sligo Port, indicating the amount and type of each lift. These shall be recorded and crosschecked with the amount landed by the vessels. Commercial document for the transportation within Ireland of animal by products and derived products not intended for human consumption in accordance with Regulation (EC) #No 1069/2009.

All records to be kept for a minimum of 3 years. The above should ensure a full paper trail of waste landed from the vessel to final disposal and be available for inspection at any time.

#### 3.3 Complaints Procedure/ Compensation for undue delay

Any complaints or queries in respect of the procedures in force should be conveyed by the agent to the harbour master. Every attempt to solve the problem locally will be made. If the grievance cannot be solved using the grievance procedure in Sligo Port, the IMO form at Annex 5 will be completed and sent to the Maritime Environment and ORE Facilitation Division in the Department of Transport.

A ship is entitled to compensation for any loss or damage suffered when unduly delayed, provided the Master of the ship has complied with the reporting procedure described in section 2.3. In any instance of alleged undue delay, the burden of proof shall lie with the Master of the ship and the Sligo County Council will compensate for any proven delays.

#### 3.4 Contract for the disposal of waste

The skip will be monitored by the Harbour Master and collection arranged as required by Greenstar Ltd. The waste will be disposed of by a licenced transport operator to the Waste to Energy Incinerator at Poolbeg, Dublin Port. The waste contractor Greenstar Ltd. will provide a receipt to the Sligo Harbour office detailing the date, time and weight of material removed from the Barytes Jetty to the WTE plant. Following disposal at Poolbeg, the waste contractor receives a receipt from the Waste to Energy facility, a copy of which is then forwarded to the Sligo Harbour office to complete the full paper trail.

## ANNEX 1

### ADVANCE NOTIFICATION FORM FOR WASTE DELIVERY TO PORT RECEPTION FACILITIES

Notification of the delivery of waste to: *(enter name of port of call, as referred to in Regulation 6 of the European Union (Port Reception Facilities for Delivery of Waste from Ships) Regulations (S. I. No. 351 of 2022))*

This form should be retained on board the ship along with the appropriate Oil Record Book, Cargo Record Book, Garbage Record Book or Garbage Management Plan as required by the MARPOL Convention.

#### 1. SHIP PARTICULARS

1.1 Name of ship:	1.5 Owner or operator:
1.2 IMO number:	1.6 Distinctive number or letters:
	MMSI (Maritime Mobile Service Identity) number:
1.3 Gross tonnage:	1.7 Flag State:
1.4 Type of ship: <input type="checkbox"/> Oil tanker <input type="checkbox"/> Chemical tanker <input type="checkbox"/> Bulk carrier <input type="checkbox"/> Container <input type="checkbox"/> Other ship cargo <input type="checkbox"/> Passenger ship <input type="checkbox"/> Ro-ro <input type="checkbox"/> Other (specify)	

#### 2. PORT AND VOYAGE PARTICULARS

2.1 Location/terminal name:	2.6 Last port where waste was delivered:
2.2 Arrival date and time:	2.7 Date of last delivery:
2.3 Departure date and time:	2.8 Next port of delivery:
2.4 Last port and country:	2.9 Person submitting this form (if other than the master):
2.5 Next port and country (if known):	

#### 3. TYPE AND AMOUNT OF WASTE AND STORAGE CAPACITY

Type	Waste to be delivered (m <sup>3</sup> )	Maximum dedicated storage capacity (m <sup>3</sup> )	Amount of waste retained on board (m <sup>3</sup> )	Port at which remaining waste will be delivered	Estimated amount of waste to be generated between notification and next port of call (m <sup>3</sup> )
MARPOL Annex I – Oil					
Oily bilge water					
Oily residues (sludge)					
Oily tank washings					
Dirty ballast water					

Type	Waste to be delivered (m <sup>3</sup> )	Maximum dedicated storage capacity (m <sup>3</sup> )	Amount of waste retained on board (m <sup>3</sup> )	Port at which remaining waste will be delivered	Estimated amount of waste to be generated between notification and next port of call (m <sup>3</sup> )
Scale and sludge from tank cleaning					
Other (please specify)					
MARPOL Annex II – NOXIOUS LIQUID SUBSTANCES (NLS) <sup>(1)</sup>					
Category X substance					
Category Y substance					
Category Z substance					
OS – other substances					
MARPOL Annex IV – Sewage					
MARPOL Annex V – Garbage					
A. Plastics					
B. Food Waste					
C. Domestic waste (e.g. paper products, rags, glass, metal, bottles, crockery, etc.)					
D. Cooking Oil					
E. Incinerator ashes					
F. Operational waste					
G. Animal carcass(es)					
H. Fishing gear					
I. E-waste					

<sup>(1)</sup> Indicate the proper shipping name of the NLS involved.

Type	Waste to be delivered (m <sup>3</sup> )	Maximum dedicated storage capacity (m <sup>3</sup> )	Amount of waste retained on board (m <sup>3</sup> )	Port at which remaining waste will be delivered	Estimated amount of waste to be generated between notification and next port of call (m <sup>3</sup> )
J. Cargo residues <sup>(1)</sup> (Harmful to the Marine Environment – HME)					
K. Cargo residues <sup>(2)</sup> (non-HME)					
MARPOL Annex VI – Air Pollution related					
Ozone depleting substances and equipment containing such substances <sup>(3)</sup>					
Exhaust gas cleaning residues					

Other waste, not covered by MARPOL

Passively fished waste

#### Notes

1. This information shall be used for port State control and other inspection purposes.
2. This form is to be completed unless the ship is covered by an exemption in accordance with Article 9 of Directive (EU) 2019/883

- 
- <sup>(1)</sup> May be estimates. Indicate the proper shipping name of the dry cargo.  
<sup>(2)</sup> May be estimates. Indicate the proper shipping name of the dry cargo.  
<sup>(3)</sup> Arising from normal maintenance activities on board.



## ANNEX 2

### WASTE DELIVERY RECEIPT

The designated representative of the port reception facility provider shall provide the following form to the master of a ship that has delivered waste in accordance with Regulation 8 of the European Union (Port Reception Facilities for Delivery of Waste from Ships) Regulations (S. I. No. 351 of 2022)

This form shall be retained on board the ship along with the appropriate Oil Record Book, Cargo Record Book, Garbage Record Book or Garbage Management Plan as required by the MARPOL Convention.

#### 1. PORT RECEPTION FACILITY AND PORT PARTICULARS

1.1. Location/terminal name:	
1.2. Port reception facility provider(s):	
1.3. Treatment facility provider(s) – if different from above:	
1.4. Waste delivery date and time from:	to:

#### 2. SHIP PARTICULARS

2.1. Name of the ship:	2.5. Owner or operator:
2.2. IMO number:	2.6. Distinctive number or letters: MMSI (Maritime Mobile Service Identity) number:
2.3. Gross tonnage:	2.7. Flag State:
2.4. Type of ship: <input type="checkbox"/> Oil tanker <input type="checkbox"/> Chemical tanker <input type="checkbox"/> Bulk carrier <input type="checkbox"/> Container <input type="checkbox"/> Other cargo ship <input type="checkbox"/> Passenger ship <input type="checkbox"/> Ro-ro <input type="checkbox"/> Other (specify)	

### 3. TYPE AND AMOUNT OF WASTE RECEIVED

MARPOL Annex I – Oil	Quantity (m <sup>3</sup> )
Oily bilge water	
Oily residues (sludge)	
Oily tank washings	
Dirty ballast water	
Scale and sludge from tank cleaning	
Other (please specify)	
MARPOL Annex II – NOXIOUS LIQUID SUBSTANCES (NLS)	Quantity (m <sup>3</sup> )/ Name <sup>(1)</sup>
Category X substance	

MARPOL Annex V – Garbage	Quantity (m <sup>3</sup> )
A. Plastics	
B. Food waste	
C. Domestic waste (e.g. paper products, rags, glass, metal, bottles, crockery, etc.)	
D. Cooking oil	
E. Incinerator ashes	
F. Operational waste	
G. Animal carcass(es)	
H. Fishing gear	

Category Y substance	
Category Z substance	
OS – other substance	
MARPOL Annex IV – Sewage	Quantity (m <sup>3</sup> )

I. E-waste	
J. Cargo residues <sup>(2)</sup> (Harmful to the Marine Environment – HME)	
K. Cargo residues <sup>(2)</sup> (non-HME)	
MARPOL Annex VI – Air Pollution related	Quantity (m <sup>3</sup> )
Ozone-depleting substances and equipment containing such substances	
Exhaust gas-cleaning residues	
Other waste, not covered by MARPOL	Quantity (m <sup>3</sup> )
Passively fished waste	

<sup>(1)</sup> Indicate the proper shipping name of the NLS involved.

<sup>(2)</sup> Indicate the proper shipping name of the dry cargo.

## ANNEX 3

### EXEMPTION CERTIFICATE

Pursuant to Regulation 10 in relation to the requirements under Regulations 6, 7(1) and 9 of the European Union (Port Reception Facilities for Delivery of Waste from Ships) Regulations (S. I. No. 351 of 2022) AT THE PORT[S] OF [INSERT PORT] IN THE STATE

Name of ship

Distinctive number of letters

Flag State

[insert name of the ship] [insert IMO number]

[insert name of Flag State]

is in scheduled traffic with frequent and regular port calls at the following port(s) located in the State according to a schedule or predetermined route:

[ ]

and calls at these ports at least once a fortnight:

[ ]

and has made an arrangement to ensure the payment of the fees and the delivery of waste to the port or a third party at the port of:

[ ]

and is thus exempted, in accordance with the Port Reception Facilities for Delivery of Waste from Ships Regulations (S. I. No. 351 of 2022), from the requirements on:

- ☐ *mandatory delivery of waste from ships,*
- ☐ *the advance waste notifications, and*
- ☐ *the payment of the mandatory fee, at the following port(s):*

This certification is valid until [insert date], unless the grounds for issuing the certificate are changed before that date.

Place and date

.....

Name

Title

## ANNEX 4

### LEGISLATION LIST

***[This list is not intended to be exhaustive – it is for reference purposes only]***

- EU Directive 2019/883 of the European Parliament and of the Council on port reception facilities for the delivery of waste from ships
- S.I. No. 351 of 2022 – European Union (Port Reception Facilities for the Delivery of Waste from Ships) Regulations 2022
- Directive 2002/84/EC amending the Directives on maritime safety and the prevention of pollution from ships
- Directive 2005/35/EC on ship-source pollution and on the introduction of penalties for infringements
- Directive 2009/123/EC amending Directive 2005/35/EC on ship-source pollution and on the introduction of penalties for infringements
- S.I. No. 542 of 2010: European Communities (Ship-Source Pollution) Regulations 2010
- Directive 2002/59/EC establishing a Community vessel traffic monitoring and information system and repealing Council Directive 93/75/EEC
- Directive 2009/17/EC amending Directive 2002/59/EC establishing a Community vessel traffic monitoring and information system
- S.I. No. 573 of 2010: European Communities (Vessel Traffic Monitoring and Information System) Regulations 2010
- Commission Directive 2011/15/EU amending Directive 2002/59/EC of the European Parliament and of the Council establishing a Community vessel traffic monitoring and information system
- S.I. No. 71 of 2012: European Communities (Vessel Traffic Monitoring and Information System) (Amendment) Regulations 2012
- Commission Directive 2014/100/EU amending Directive 2002/59/EC establishing a Community vessel traffic monitoring and information system
- S.I. No. 367 of 2016: European Communities (Vessel Traffic Monitoring and Information System) (Amendment) Regulations 2016
- S.I. No. 550 of 2017: European Communities (Vessel Traffic Monitoring and Information System) (Amendment) Regulations 2017
- Directive (EU) 2016/802 of the European Parliament and of the Council of 11 May 2016 relating to a reduction in the sulphur content of certain liquid fuels
- S.I. No. 361 of 2015: European Union (Sulphur Content of Marine Fuels) Regulations 2015
- Sea Pollution Act, 1991
- Sea Pollution (Amendment) Act, 1999
- Sea Pollution (Miscellaneous Provisions) Act, 2006

*[Statutory Instrument(s) giving effect to MARPOL Annex I]*

- S.I. No. 788 of 2007: Sea Pollution (Prevention of Oil Pollution) Regulations 2007
- S.I. No. 282 of 2008: Sea Pollution (Prevention of Oil Pollution) (Amendment) Regulations 2008
- S.I. No. 664 of 2010: Sea Pollution (Prevention of Oil Pollution) (Amendment) Regulations 2010
- S.I. No. 365 of 2011: Sea Pollution (Prevention of Oil Pollution) (Amendment) Regulations 2011

- S.I. No. 275 of 2014: Sea Pollution (Prevention of Oil Pollution) (Amendment) Regulations 2014
- S.I. No. 461 of 2016: Sea Pollution (Prevention of Oil Pollution) (Amendment) Regulations 2016
- S.I. No. 578 of 2016: Sea Pollution (Prevention of Oil Pollution) (Amendment) (No. 2) Regulations 2016
- S.I. No. 582 of 2016: Sea Pollution (Prevention of Oil Pollution) (Amendment) (No. 3) Regulations 2016
- S.I. No. 236 of 2018: Sea Pollution (Prevention of Oil Pollution) (Amendment) Regulations 2018

*[Statutory Instrument(s) giving effect to MARPOL Annex II]*

- S.I. No. 217 of 2008: Sea Pollution (Control of Pollution by Noxious Liquid Substances in Bulk) Regulations 2008
- S.I. No. 393 of 2017: Sea Pollution (Control of Pollution by Noxious Liquid Substances in Bulk) (Amendment) Regulations 2017

*[Statutory Instrument(s) giving effect to MARPOL Annex III]*

- S.I. No. 510 of 2013: Sea Pollution (Harmful Substances in Packaged Form) Regulations 2013
- S.I. No. 459 of 2016: Sea Pollution (Harmful Substances in Packaged Form) (Amendment) Regulations 2016

*[Statutory Instrument(s) giving effect to MARPOL Annex IV]*

- S.I. No. 269 of 2006: Sea Pollution (Prevention of Pollution by Sewage from Ships) Regulations 2006
- S.I. No. 281 of 2008: Sea Pollution (Prevention of Pollution by Sewage from Ships) (Amendment) Regulations 2008
- S.I. No. 372 of 2008: Sea Pollution (Prevention of Pollution by Sewage from Ships) (Amendment) (No.2) Regulations 2008
- S.I. No. 492 of 2012: Sea Pollution (Prevention of Pollution by Sewage from Ships) (Amendment) Regulations 2012

*[Statutory Instrument(s) giving effect to MARPOL Annex V]*

- S.I. No. 372 of 2012: Sea Pollution (Prevention of Pollution by Garbage from Ships) Regulations 2012

*[Statutory Instrument(s) giving effect to MARPOL Annex VI]*

- S.I. No. 313 of 2010: Sea Pollution (Prevention of Air Pollution from Ships) Regulations 2010
- S.I. No. 383 of 2011: Sea Pollution (Prevention of Air Pollution from Ships) (Amendment) Regulations 2011

- S.I. No. 596 of 2011: Sea Pollution (Prevention of Air Pollution from Ships) (Amendment) (No. 2) Regulations 2011
- S.I. No. 35 of 2013: Sea Pollution (Prevention of Air Pollution from Ships) (Amendment) Regulations 2013
- S.I. No. 48 of 2017: Sea Pollution (Prevention of Air Pollution from Ships) (Amendment) Regulations 2017

*[Statutory Instrument(s) giving effect to other international legislation]*

- S.I. No. 82 of 2008: Sea Pollution (Control of Harmful Anti-fouling Systems on Ships) Regulations 2008

*[Other legislation]*

- Waste Management Act, 1996 [No. 10 of 1996]
- Waste Management (Amendment) Act, 2001 [No. 36 of 2001]
- Protection of the Environment Act, 2003 [No. 27 of 2003]
- Diseases of Animals Act, 1966
- Diseases of Animals (Amendment) Act, 2001
- S.I. No. 153 of 1985: Diseases of Animals (Feeding and Use of Swill) Order 1985
- S.I. No. 133 of 1987: Diseases of Animals (Feeding and Use of Swill) (Amendment) Order 1987
- S.I. No. 597 of 2001: Diseases of Animals Act, 1966 (Prohibition on the Use of Swill) Order, 2001
- S.I. No. 252 of 2008: European Communities (Transmissible Spongiform Encephalopathies and Animal By-Products) Regulations 2008
- S.I. No. 12 of 2009: Diseases of Animals Act 1966 (Prohibition On the Use of Swill) (Amendment) Order 2009
- Regulation (EC) No 1069/2009 of the European Parliament and of the Council of 21 October 2009 laying down health rules as regards animal by-products and derived products not intended for human consumption and repealing Regulation (EC) No 1774/2002 (Animal by-products Regulation)
- Commission Regulation (EU) No 142/2011 of 25 February 2011 implementing Regulation (EC) No 1069/2009 of the European Parliament and of the Council laying down health rules as regards animal by-products and derived products not intended for human consumption and implementing Council Directive 97/78/EC as regards certain samples and items exempt from veterinary checks at the border under that Directive
- Animal Health and Welfare Act, 2013
- S.I. No. 187 of 2014: European Union (Animal By-Products) Regulations 2014
- S.I. No. 126 of 2011: European Communities (Waste Directive) Regulations 2011
- S.I. No. 323 of 2020: European Union (Waste Directive) Regulations 2020

## Annex 5

### FORMAT FOR REPORTING ALLEGED INADEQUACIES OF PORT RECEPTION FACILITIES

The master of a ship having encountered difficulties in discharging waste to reception facilities should forward the information below, together with any supporting documentation, to the Administration of the flag State and, if possible, to the competent Authorities in the port State. The flag State shall notify IMO and the port State of the occurrence. The port State should consider the report and respond appropriately informing IMO and the reporting flag State of the outcome of its investigation.

#### 1 SHIP'S PARTICULARS

- 1.1 Name of ship: \_\_\_\_\_
- 1.2 Owner or operator: \_\_\_\_\_
- 1.3 Distinctive number or letters: \_\_\_\_\_
- 1.4 IMO Number: \_\_\_\_\_
- 1.5 Gross tonnage: \_\_\_\_\_
- 1.6 Port of registry: \_\_\_\_\_
- 1.7 Flag State: \_\_\_\_\_
- 1.8 Type of ship:
- |   |  |  |
|---|--|--|
| <input type="checkbox"/> Oil tanker       | <input type="checkbox"/> Chemical tanker | <input type="checkbox"/> Bulk carrier          |
| <input type="checkbox"/> Other cargo ship | <input type="checkbox"/> Passenger ship  | <input type="checkbox"/> Other (specify) _____ |

#### 2 PORT PARTICULARS

- 2.1 Country: \_\_\_\_\_
- 2.2 Name of port or area: \_\_\_\_\_
- 2.3 Location/terminal name: \_\_\_\_\_  
(e.g. berth/terminal/jetty)
- 2.4 Name of company operating the reception facility (if applicable): \_\_\_\_\_
- 2.5 Type of port operation:
- |  |                                       |                                   |
|--|---------------------------------------|-----------------------------------|
| <input type="checkbox"/> Unloading port        | <input type="checkbox"/> Loading port | <input type="checkbox"/> Shipyard |
| <input type="checkbox"/> Other (specify) _____ |                                       |                                   |
- 2.6 Date of arrival: \_\_\_\_ / \_\_\_\_ / \_\_\_\_ (dd/mm/yyyy)
- 2.7 Date of occurrence: \_\_\_\_ / \_\_\_\_ / \_\_\_\_ (dd/mm/yyyy)
- 2.8 Date of departure: \_\_\_\_ / \_\_\_\_ / \_\_\_\_ (dd/mm/yyyy)

### 3 INADEQUACY OF FACILITIES

#### 3.1 Type and amount of waste for which the port reception facility was inadequate and nature of problems encountered

Type of waste	Amount for discharge (m <sup>3</sup> )	Amount not accepted (m <sup>3</sup> )	Problems encountered Indicate the problems encountered by using one or more of the following code letters, as appropriate. A No facility available B Undue delay C Use of facility technically not possible D Inconvenient location E Vessel had to shift berth involving delay/cost F Unreasonable charges for use of facilities G Other (please specify in paragraph 3.2)
<b>MARPOL Annex I-related</b>			
Type of oily waste:			
Oily bilge water			
Oily residues (sludge)			
Oily tank washings (slops)			
Dirty ballast water			
Scale and sludge from tank cleaning			
Other (please specify .....)			
<b>MARPOL Annex II-related</b>			
Category of NLS residue/water mixture for discharge to facility from tank washings:			
Category X substance			
Category Y substance			
Category Z substance			
<b>MARPOL Annex IV-related</b>			
Sewage			
<b>MARPOL Annex V-related</b>			
Type of garbage:			
A. Plastics			
B. Food wastes			
C. Domestic wastes (e.g. paper products, rags, glass, metal, bottles, crockery, etc.)			
D. Cooking oil			
E. Incinerator ashes			
F. Operational wastes			
G. Cargo residues			
H. Animal carcass(es)			
I. Fishing gear			
<b>MARPOL Annex VI-related</b>			
Ozone-depleting substances and equipment containing such substances			
Exhaust gas-cleaning residues			



3.2 Additional information with regard to the problems identified in the above table.

---

---

---

---

3.3 Did you discuss these problems or report them to the port reception facility?

☐ Yes ☐ No

If Yes, with whom (please specify)

---

---

If Yes, what was the response of the port reception facility to your concerns?

---

---

3.4 Did you give prior notification (in accordance with relevant port requirements) about the vessel's requirements for reception facilities?

☐ Yes ☐ No ☐ Not applicable

If Yes, did you receive confirmation on the availability of reception facilities on arrival?

☐ Yes ☐ No

#### 4 ADDITIONAL REMARKS/COMMENTS

---

---

---

---

\_\_\_\_\_  
Master's signature

Date: \_\_\_\_/\_\_\_\_/\_\_\_\_ (dd/mm/yyyy)